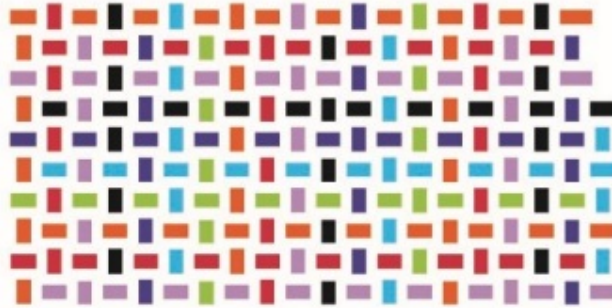




KDADS Prescription Drug and Opioid Prevention Efforts

**Sarah Fischer, Director,
Prevention & Promotion Services**

August 28, 2017



Kansas Prevention COLLABORATIVE

CONNECTING COMMUNITIES | Promotion | Education
Awareness | Advocacy

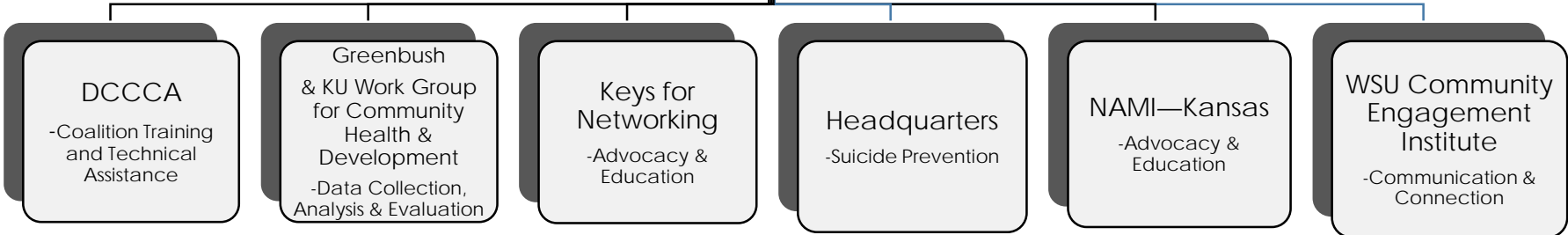
www.kansaspreventioncollaborative.com

September 1, 2017

AD ASTRA



KDADS
Prevention &
Promotion
Services



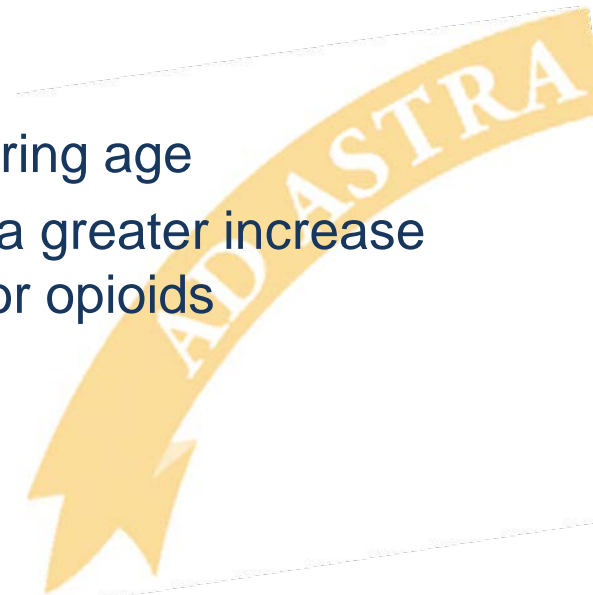
Prevention**TQ**KS

Prevention**Wor**KS



Policy Academy

- KDADS submitted an application in 2014 and was selected to attend SAMHSA's Prescription Drug Policy Academy
- Partners:
 - KDADS Prevention and Treatment
 - KDHE
 - DCF
 - Board of Pharmacy
 - Evaluation Expert
- Initial Focus was on Women (18-40) of child bearing age
 - From 2008 to 2013 treatment data indicated a greater increase in the number of women seeking treatment for opioids



Policy Academy & Statewide Workgroup

- A draft plan was created on-site in DC and adapted by the workgroup, first function was a kick-off meeting- 12-9-2014
- After the award of the Partnership For Success Grant in September of 2015—an effort to re-energize the workgroup was made
- Currently the workgroup is very active and strong and has diverse membership
- Facilitated by DCCCA
- Working on Strategic Plan-currently in the needs assessment phase
- Planning for a series of one day conferences across Kansas for late October/November



Policy Academy Partners

- KDADS
- KDHE
- DCF
- DCCCA
- Greenbush
- KS Board of Pharmacy
- KS Board of Healing Arts
- KS Pharmacist Association
- Valley Hope
- KS Foundation for Medical Care
- KS Poison Control Center
- KC Metro Methadone Clinic
- Collaborative on Chronic Pain
- American Association of Oral and Maxillofacial Surgeons
- Sunflower Health Plans
- Child Death Review Board
- Prairie Band Pottawatomie Tribe
- Kickapoo Tribe
- Iowa Tribe of KS & Nebraska



Partnership For Success 2015

- Targets underage drinking and RX Drug misuse/abuse
- DCCCA is coordinating the RX Pilot Project
- Three community pilot sites
 - Finney County
 - Atchison County
 - Sedgwick County
- Data collection project at Kansas City Metro Methadone Project (KCMMP)
 - Completing screens with every patient seeking treatment, goal is to assess the age of initiation and woman of child bearing age to assess risks



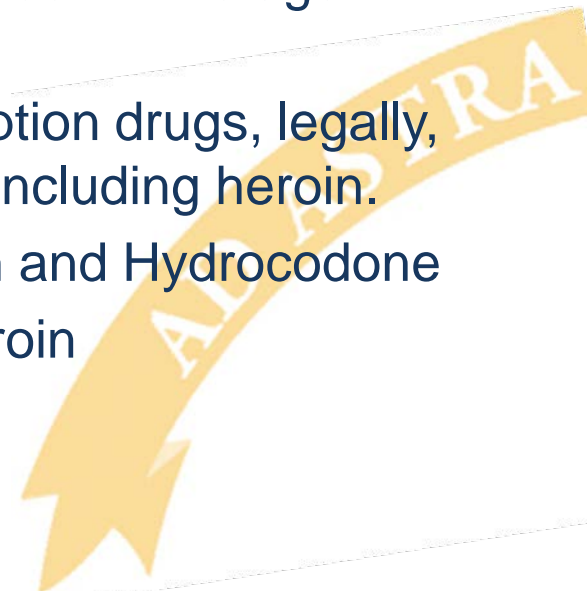
Partnership For Success 2015

- **Pharmacy Pilot Projects**
 - Targeting five independent pharmacies located in counties with high rates of morphine milligram equivalents of opioids per capita (2015)
 - Providing medication disposal bags and education with each new/non-maintenance prescription
 - Patient required to complete a pre-survey and consent to participate in the pilot study, if consent granted, a follow up survey is given following use of the medication.
 - Pilot is based on a similar project in Delaware
- **Safe Storage Project**
 - The PFS is working with DCCCA Child Placing Agency to provide medication lock boxes to foster families across the state, the boxes promote safe use, storage, and transportation of medication and help to prevent poisoning and misuse.



Partnership For Success 2015

- **Highlights from the KCMMP:**
 - 60% of the female population seeking treatment is within child bearing age
 - 71.9% of the population seeking treatment are between the ages of 18-44
 - 82% of the population initiated drug use at or below the age of 25
 - Over half the population began using prescription drugs, legally, leading to misuse and use of stronger drugs including heroin.
 - The most commonly abused RXs are Vicodin and Hydrocodone
 - Primary drug of choice upon admission is heroin



State Targeted Response to Opioid Crisis (STR) Grant

- Awarded to Kansas in April, 2017
- 85% focuses on treatment, 15% on prevention
- Regional funding was awarded to:
 - University of Kansas Health System
 - Central Kansas Foundation
 - Heartland RADAC, awarded
 - Four County Mental Health Center
- Also will be launching a statewide awareness campaign in the next couple of months



Misusing prescription drugs is dangerous.

There's one side effect that's really scary: An increased risk of abusing alcohol and illegal drugs.

Teenagers who misuse medications are

- Twice as likely to abuse alcohol
- 20 times as likely to use illegal drugs



Know the truth. It Matters.



Organization Name
Contact1
Contact2

Are **you** the one who gets addicted?

Some drug users become addicted. That includes people who misuse prescription drugs.

Don't become the one. Know the risks of prescription drugs. It Matters.



Organization Name
Contact1
Contact2

The overdose picture is changing.

What do you think of when you hear "overdose death"? More and more, it's non-medical use of prescription drugs that's taking lives.

Know the risks of abusing medication. It Matters.



Organization Name
Contact1
Contact2

www.itmattersks.org